

Nike Sphere Dry Diamond Polo 354055



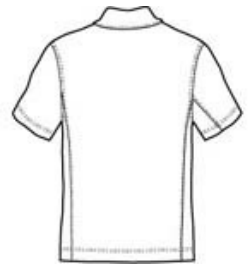
Achieve the pinnacle of performance in this style that pairs a rich diamond texture with Sphere Dry moisture management technology. The ultra-modern fabric has a “bumpy” inside surface to come in contact with the skin. Perfect for any occasion, this exceptional shirt is designed for maximum movement, minimal cling and increased air flow. Finished with a self-fabric collar and open hem sleeves. Features a three-button placket. Pearlized buttons are selected to complement the shirt color. The contrast Swoosh design trademark is embroidered on the left sleeve. Made of 6.35-ounce, 89/11 polyester/spandex.

CARE INSTRUCTIONS

Machine wash warm, with like colors. Do not bleach. Do not use softeners. Tumble dry low. Cool iron. Do not dry clean.

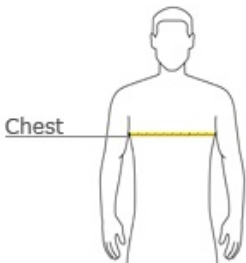


front



back

HOW TO MEASURE



CHEST

With arms down at sides, measure around the upper body, under arms and over the fullest part of the chest.

SIZE CHART

	XS	S	M	L	XL	2XL	3XL	4XL
Chest	32-35	35-38	38-41	41-44	44-47	47-50	50-53	53-56

COLOR INFORMATION



Black
PMS ProBlk C



Chlorophyll



Light Blueberry
PMS 653 C



Midnight Navy



Olive Khaki



Pro Blue
PMS 7545 C



Varsity Red
PMS 187 C



White
PMS GY 1 C